

CAPACITY	• 400 amps at 60% duty cycle
ELECTRODE SIZE	• 1/16"-1/4" (1.6 mm-6.4 mm)
WEIGHT	• 17 oz. (481 g)
LENGTH	• 8 3/4" (22 cm)
CABLE CONNECTION	• Model "B" large ball point screw connection
CABLE SOCKET	• 19/32" (1.5 cm)

Bernard's Shortstub stick electrode holder has maintained its time-tested design for decades.

- Electrodes can be used to within one inch of the high heat, high impact head compared with the normal three inches of the electrode that is leftover when using a typical tong-type holder.
- Bernard® Shortstub greatly improves productivity because it is designed for quick, easy installation of electrodes and it is built to last with a proven high impact, high heat replaceable head.
- Over 2,000 pounds of gripping pressure enables the electrode to be bent to a desired shape for access to difficult welds.

Made with
Pride and without
Compromise in the

USA

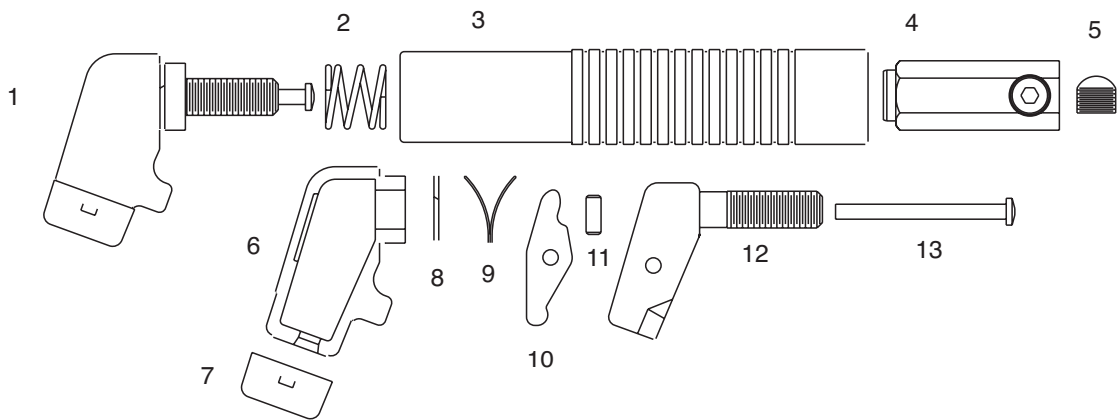
PART NUMBER:

40B



REPLACEMENT PARTS LIST

40B SHORTSTUB



Item	Part Number	Description
1.	K40	Head Assembly
2.	2500012P	Coil Spring
3.	MH4	Handle (molded)
4.	B37	Connector Body
5.	B33P	Ball Point Set Screw
6.	EL	Head Insulator (Pair)
7.	BB4	Boot
8.	SR4	Snap Ring
9.	V4	V Jaw Spring
10.	J4	Jaw
11.	JP4	Jaw Pin
12.	H4	Head
13.	PP4P	Pressure Pin

BRAND AND PRODUCT NAMES SHOWN ABOVE ARE TRADEMARKS OF THEIR RESPECTIVE OWNERS.
SUBJECT TO CHANGE – THE INFORMATION PRESENTED IN THIS SPEC SHEET IS ACCURATE TO THEBEST OF OUR KNOWLEDGE AT THE TIME OF PRINTING.
PLEASE VISIT BERNARDTREGASKISS.COM FOR THE MOST UP-TO-DATE INFORMATION.

DISTRIBUTED BY:

©2025 Bernard®

